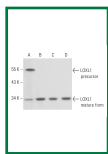
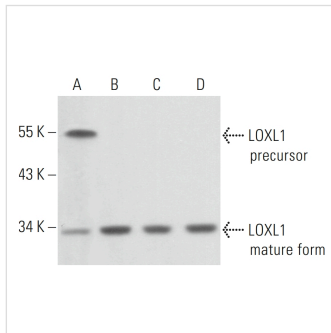


## LOXL1 mouse monoclonal Antibody (H-11)



### Key features and details

Reactivity: Human, Mouse, Rat

Application: WB, IP, IF, ELISA

Host: Mouse

Clonality: Monoclonal

Isotype: IgG1κ

Target Name: OXL1

Brand: **AREX**  
BIOSCIENCES

CAT.NO. : ARA0003

**US\$: 350.00**

Size:

100µg

Trail, Bulk size or  
Custom requests  
Please contact us

\*产品价格可能会有所调整，请以品牌方官网实时更新的价格为准，以确保准确性。

## Product Details

### BACKGROUND

Lysyl oxidase (LOX) proteins belong to a family of enzymes that oxidize primary amine substrates to reactive aldehydes. In fibrillar collagens and elastin, LOX catalyzes the lysine-derived cross-links of collagen fibrils and insoluble elastic fibers in the extracellular matrix. It can localize both to the nucleus and the cytoplasm. LOX is involved in tumor suppression, cell motility, cellular senescence and developmental regulation. There are four homologs of LOX, lysyl oxidase-like proteins, designated LOX-like (LOXL1-LOXL4) proteins. LOXL1 is an extracellular protein that localizes specifically to sites of elastogenesis. It serves as a cross-linking enzyme, controlling the deposition of elastin. LOXL1 interacts with Fibulin-5.

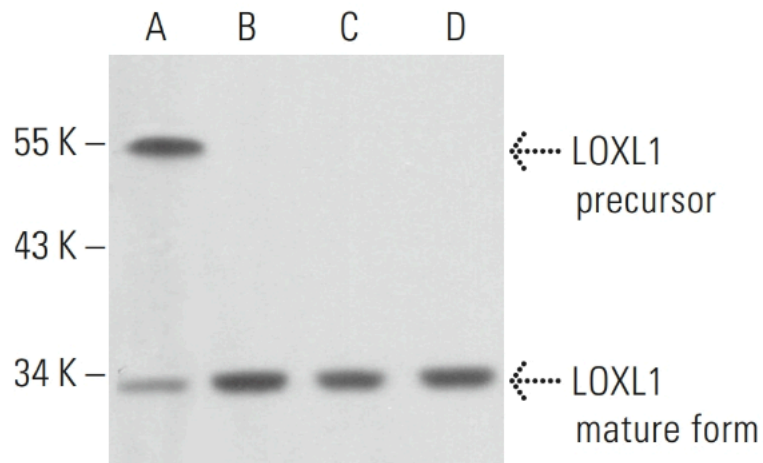
### Application

LOXL1 (H - 11) is recommended for detection of LOXL1 of mouse, rat and human origin by Western Blotting (starting dilution 1:100, dilution range 1:100 - 1:1000), immunoprecipitation [1 - 2 µg per 100 - 500 µg of total protein (1 ml of cell lysate)], immunofluorescence (starting dilution 1:50, dilution range 1:50 - 1:500) and solid phase ELISA (starting dilution 1:30, dilution range 1:30 - 1:3000).

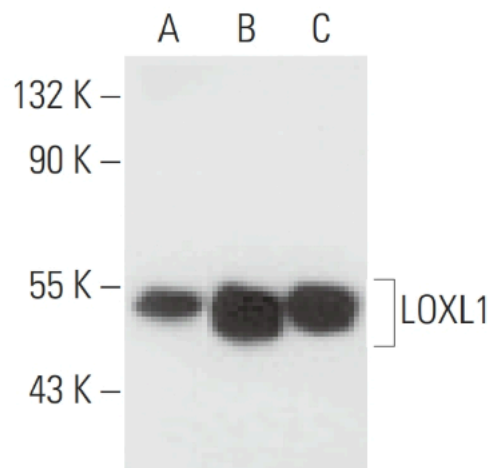
Molecular Weight of LOXL1 precursor: 56 kDa.

Molecular Weight of mature LOXL1: 32 kDa.

## Data



LOXL1 (H - 11). Western blot analysis of LOXL1 expression in HeLa (A), NIH/3T3 (B), 3T3-L1 (C) and AMJ2 - C8 (D) whole cell lysates.



LOXL1 (H-11). Western blot analysis of LOXL1 expression in Jurkat (A), HeLa (B) and SJRH30 (C) whole cell lysates.