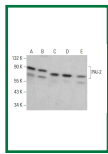
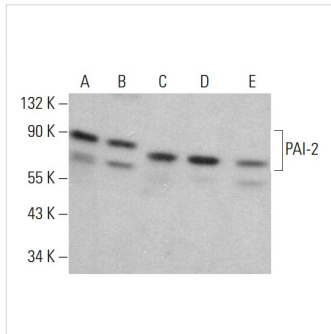


## PAI-2 Mouse Monoclonal Antibody (E-1)



### Key features and details

Reactivity: Human, Mouse, Rat

Application: WB, IP, IF, ELISA

Host: Mouse

Clonality: Monoclonal

Isotype: IgG2ak

Target Name: PAI-2

Brand: **AREX**  
Biosciences

CAT.NO. : ARA0201

**US\$: 350.00**

Size:

200µg

Trail, Bulk size or  
Custom requests  
Please contact us

\*产品价格可能会有所调整，请以品牌方官网实时更新的价格为准，以确保准确性。

## Product Details

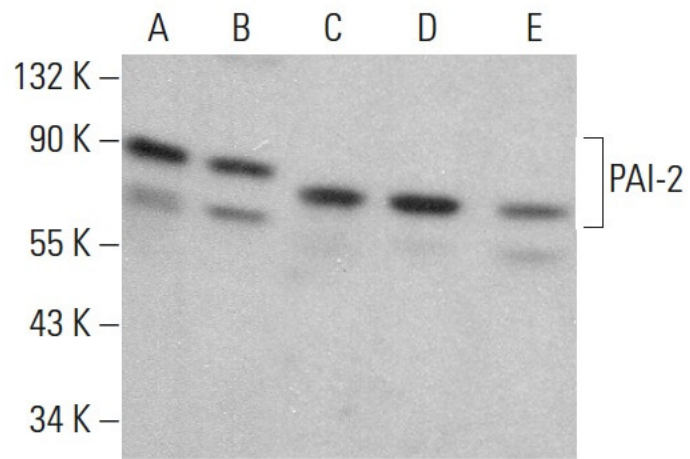
### BACKGROUND

PAI-1 and PAI-2 (for plasminogen activator inhibitor-1 and -2) are members of the Serpin serine proteinase inhibitor family. PAI-1 and PAI-2 have been shown to regulate uPA (urokinase - type plasminogen activator) and tPA (tissue plasminogen activator), resulting in the inhibition of proteolytic activity. Members of the Serpin family generally complex with their target proteinases, then disassociate slowly into cleaved species that fold into stable inactive forms. PAI-1 can fold into the inactive state without cleavage, resulting in the latent form of PAI-1. Activity can be restored to the latent form of PAI-1 through denaturation and renaturation. PAI-2 occurs in secreted and cytosolic forms through facultative polypeptide translocation. uPa is a serine proteinase that is a member of the Trypsin family. It is responsible for the cleavage of plasminogen at the Arg - Val bond to produce plasmin. uPA consists of two chains, designated A and B. The A chain can be cleaved, resulting in low and high molecular mass forms of uPA.

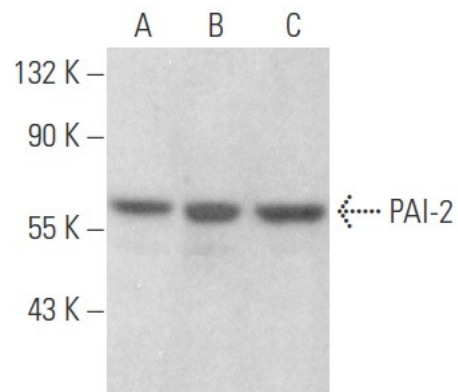
### Application

PAI-2 (E-1) is recommended for detection of PAI-2 of mouse, rat and human origin by Western Blotting (starting dilution 1:100, dilution range 1:100 - 1:1000), immunoprecipitation [1 - 2 µg per 100 - 500 µg of total protein (1 ml of cell lysate)], immunofluorescence (starting dilution 1:50, dilution range 1:50 - 1:500) and solid phase ELISA (starting dilution 1:30, dilution range 1:30 - 1:3000).

## Data



PAI-2 (E-1). Western blot analysis of PAI-2 expression in K-562 (A), WI-38 (B), C2C12 (C), WEHI-231 (D) and A-10 (E) whole cell lysates.



PAI-2 (E-1). Western blot analysis of PAI-2 expression in K-562 (A), JAR (B) and A-431 (C) whole cell lysates.