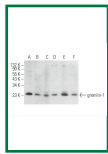
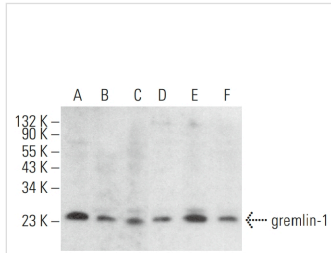


gremlin-1 Mouse Monoclonal Antibody (C-7)



Key features and details

Reactivity: Human, Mouse, Rat

Application: WB, IP, IF, ELISA

Host: Mouse

Clonality: Monoclonal

Isotype: IgG2bk

Target Name: gremlin-1

Brand: **AREX**
BIOSCIENCES

CAT.NO.: ARA0117

US\$: 350.00

Size:

200µg

Trail, Bulk size or
Custom requests
Please contact us

*产品价格可能会有所调整，请以品牌方官网实时更新的价格为准，以确保准确性。

Product Details

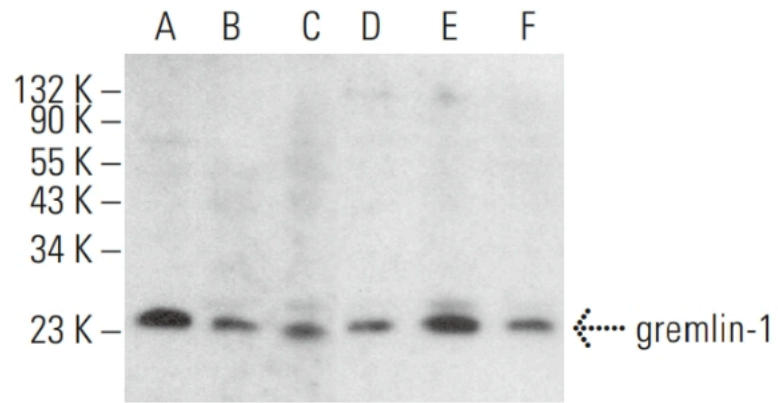
Background

The gremlin protein family contains antagonists of bone morphogenetic protein (BMP) signaling that are expressed in the neural crest. All family members are secreted proteins that act as BMP antagonists in embryonic explants and are expressed in the proximal airway epithelium of the lung during embryonic development. gremlin - 1 is required for early limb outgrowth and patterning in the FGF4 - SHH feedback loop, while gremlin - 2 binds and blocks the activity of BMP - 2 and BMP - 4. The dorsaling factor gremlin belongs to a novel gene family that includes the head - inducing factor Cerberus and the tumor suppressor DAN. Additionally, secreted gremlin relays the Sonic hedgehog signal from the polarizing region to the apical ectodermal ridge.

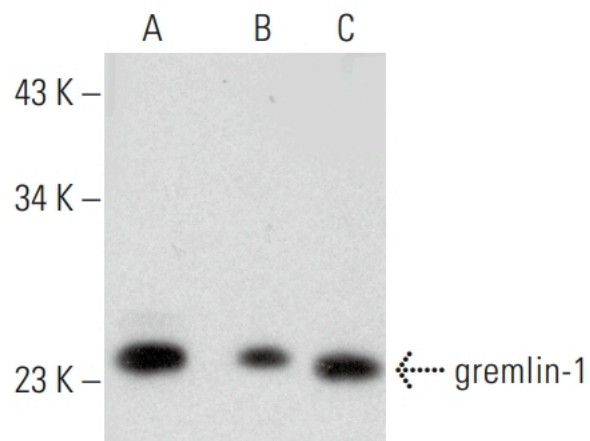
Application

gremlin - 1 (C - 7) is recommended for detection of gremlin - 1 of mouse, rat and human origin by Western Blotting (starting dilution 1:100, dilution range 1:100 - 1:1000), immunoprecipitation [1 - 2 µg per 100 - 500 µg of total protein (1 ml of cell lysate)], immunofluorescence (starting dilution 1:50, dilution range 1:50 - 1:500) and solid phase ELISA (starting dilution 1:30, dilution range 1:30 - 1:3000).

Data



gremlin - 1 (C - 7). Western blot analysis of gremlin - 1 expression in A549 (A), C2C12 (B), P19 (C), Sol8 (D), F9 (E) and L6 (F) whole cell lysates.



gremlin - 1 (C - 7). Western blot analysis of gremlin - 1 expression in COLO 320DM (A), A549 (B) and Ramos (C) whole cell lysates.