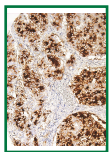
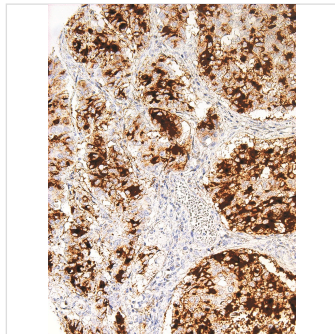


BG8, Lewis Y Mouse Monoclonal Antibody (IHC517)



Key features and details

Reactivity: Human

Application: IHC

Host: Mouse

Clonality: Monoclonal

Isotype: IgG1

Target: BG8, LewisY

Brand: **AREX**
BIOSCIENCES

CAT.NO. : ARA8517

US\$: 350.00

Size:

100µg

Trail, Bulk size or
Custom requests
Please contact us

*产品价格可能会有所调整，请以品牌方官网实时更新的价格为准，以确保准确性。

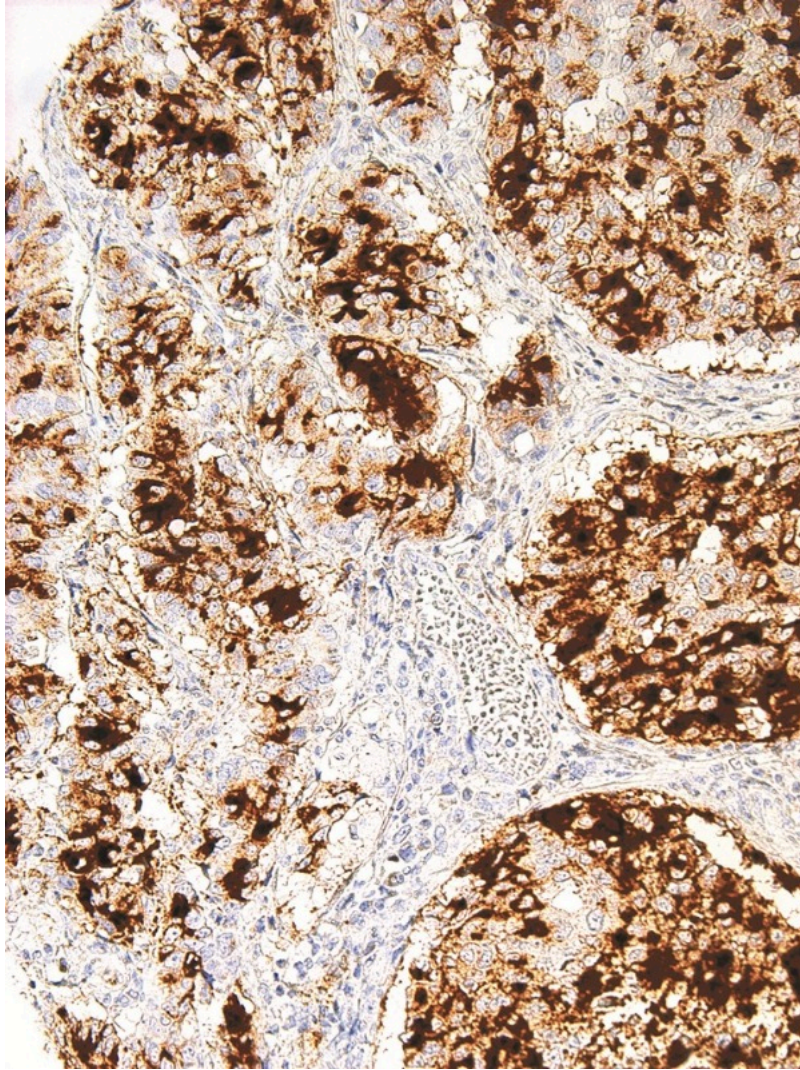
Product Details

Background

BG8 Lewis^Y, also known as Lewis^Y Blood Antigen or simply BG8, is a blood group antigen that has been identified in many studies as a potential marker for differentiation between pulmonary adenocarcinoma (PACA) and epithelioid mesothelioma (EM). It has been reported that sensitivity of non-mesothelial antigens for adenocarcinoma is organ-dependent. When attempting to differentiate epithelioid mesothelioma from adenocarcinoma, BG8 Lewis^Y performed at a sensitivity of 98% in the breast cancer group, and 100% in the lung cancer group.

Application

Dilution: IHC:1:50-1:200
Tris Buffer, pH 7.3 - 7.7, with 1% BSA and <0.1% Sodium Azide

Data

Immunohistochemistry (Formalin/PFA-fixed paraffin-embedded sections) analysis of Human lung cancer tissue sections labeling BG8 with IHC517.

Storage

Store at -20°C. Stable for one year from the date of shipment.