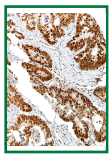
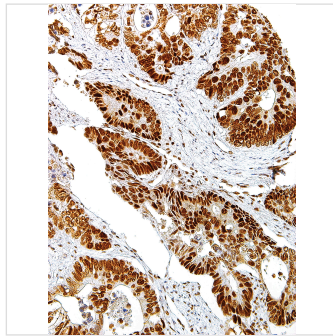


MLH1 Mouse Monoclonal Antibody (IHC409)



Key features and details

Reactivity: Human

Application: IHC

Host: Mouse

Clonality: Monoclonal

Isotype: IgG2a

Target Name: MLH1

Brand: **AREX**
BIOSCIENCES

CAT.NO. : ARA1409

US\$: 350.00

Size:

100μL

Trail, Bulk size or
Custom requests
Please contact us

*产品价格可能会有所调整，请以品牌方官网实时更新的价格为准，以确保准确性。

Product Details

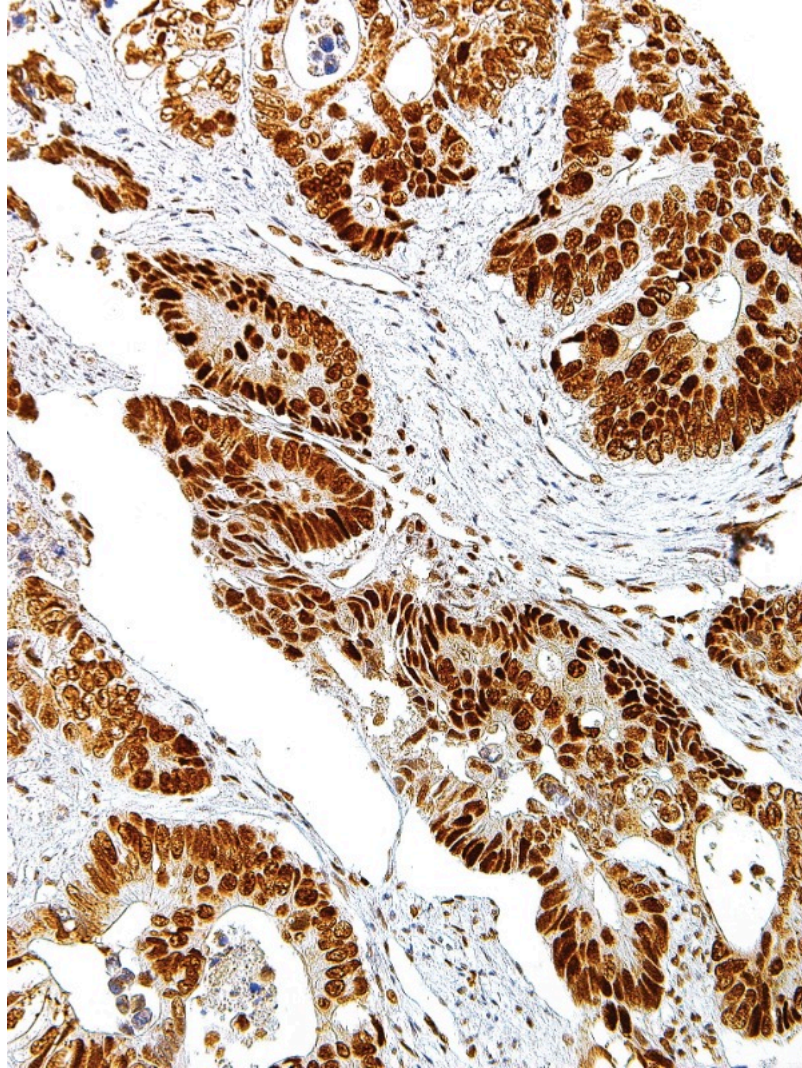
Background

MutL Homolog 1 (MLH1) is a protein involved in the mismatch-repair pathway. This protein is commonly associated with hereditary non-polyposis colorectal cancer, as the MLH1 gene is frequently mutated in patients with this cancer. Studies have shown MLH1 to be deficient in a high percentage of patients with microsatellite instability, as well as endometrial and ovarian cancers. Use of Anti-MLH1 is optimized when paired in an IHC panel with MSH6, MSH2, and PMS2. Anti-MLH1 is useful in the detection of MLH1 in a number of normal and neoplastic tissues, and for identifying a loss of MLH1 in tumours that are microsatellite-unstable.

Application

Dilution: IHC: 1:50-1:200

Buffer Composition: Tris Buffer, pH 7.3 - 7.7, with 1% BSA and <0.1% Sodium Azide

Data

Immunohistochemistry (Formalin/PFA-fixed paraffin-embedded sections) analysis of Human colon tissue sections labeling MLH1 with IHC409-100.

Storage

Store at -20°C. Stable for one year from the date of shipment.