

Human von Willebrand Factor ELISA Instructions

CAT. No: AEHY0010

CONTENT

No.	Content	Cat. No	Volume
1	CP (Coated Plate)	ER0001 CP	96 wells
2	S (Standard)	ER0001S,S1~S7,S0	9 vials
3	DA (Detect Antibody)	ER0001 DA	6 ml/bottle
4	SH(Streptavidin-HRP)	ESH01	12 ml/bottle
5	AB (Assay Buffer 1×)	EAB01	12 ml/bottle
6	TS (TMB Substrate)	ETS01	12 ml/bottle
7	SS (Stop Solution)	ESS01	12 ml/bottle
8	WB (Wash Buffer 10×)	EWB01	50 ml/bottle
9	SF (Sealer Film)	ESF01	6 pieces

NOTE: After the kit is opened, the stabilization period of each content is 30 days, so please use the kit within 30 days after opening.

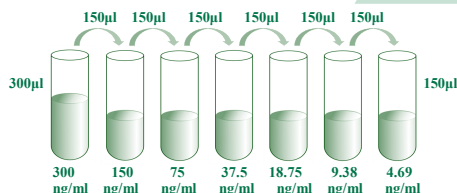
SAMPLE DILUTION

Samples such as serum, plasma require at least a 40-fold dilution into Sample Diluent. A suggested 40-fold dilution is 10 µl of sample + 390 µl of Sample Diluent.

REAGENT PREPARATION

Washing Buffer (1×) Preparation: Pour entire contents (50 ml) of the **Washing Buffer Concentrate** (10×) into a clean 500 ml graduated cylinder. Bring to final volume of 500 ml with glass-distilled or deionized water. Transfer to a clean wash bottle and store at 2 to 25°C.

Standard Curve Preparation: S1 to S7 and S0 is ready to use for serum and plasma.

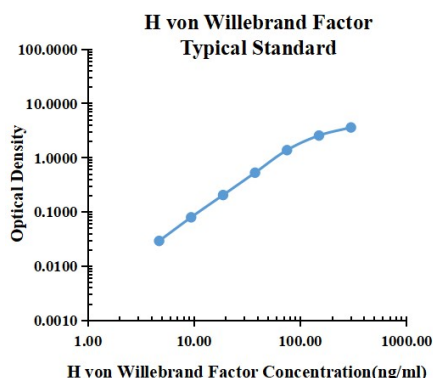


ASSAY PROCEDURE

Bring all reagents and samples to room temperature before use.

1. Prepare all reagents and working standards as directed in the previous sections.
2. Remove excess **CP** (Coated Plate) strips from the plate frame, return them to the foil pouch and reseal.
3. Add 50 µl of **AB** (Assay Buffer) to each well.
4. Add 50 µl or 10 µl of **Standard or sample** per well. Ensure reagent addition is uninterrupted and completed within 15 minutes.
5. Add 50 µl of **DA-H** (Detect Antibody) to each well.
6. Cover with an **SF** (Sealer Film). Incubate at room temperature (18 to 25°C) for 1 hour on a microplate **shaker** set at 500 rpm.
7. Aspirate each well and **wash**, repeating the process four times. Wash by filling each well with WB (Washing Buffer 300 µl). Complete removal of liquid at each step is essential to good performance. After the last wash, remove any remaining WB (Washing Buffer) by aspirating or decanting. Invert the plate and **blot** it against clean paper towels.
8. Add 100 µl of **TS** (TMB Substrate) to each well. Incubate for 5-30 minutes at room temperature.
9. Add 100 µl of **SS** (Stop Solution) to each well.
10. Determine the optical density within 30 minutes, using microplate **reader** set to 450 nm corrected with 570 nm or 630 nm.

TYPICAL DATA



ng/ml	O.D.		Average	Corrected
0.00	0.0064	0.0058	0.0061	
4.69	0.0354	0.0345	0.0350	0.0293
9.38	0.0859	0.0789	0.0824	0.0798
18.75	0.2116	0.1990	0.2053	0.2055
37.50	0.5367	0.5317	0.5342	0.5306
75.00	1.3890	1.3180	1.3535	1.3829
150.00	2.5750	2.7090	2.6420	2.5689
300.00	3.6260	3.6480	3.6370	3.6199

SENSITIVITY

The minimum detectable dose (MDD) of human von Willebrand Factor is typically less than 0.02 ng/ml (50 µl of sample volume) or 0.69 ng/ml (10 µl of sample volume).

The MDD was determined by adding two standard deviations to the mean optical density value of ten zero standard replicates and calculating the corresponding concentration.

PRECISION

- Intra-assay Precision (Precision within an assay) Three samples of known concentration were tested twenty times on one plate to assess intra-assay precision.
- Inter-assay Precision (Precision between assays)

	Intra-assay Precision			Inter-assay Precision		
	S1	S2	S3	S1	S2	S3
Sample Number	22	22	22	6	6	6
Average (ng/ml)	5.7	32.8	151.8	5.3	31.3	113.6
Standard deviation	0.2	1.7	10.4	0.1	2.0	7.7
Coefficient of variation (%)	2.7	5.2	6.8	2.6	6.4	6.7

RECOVERY

The spike recovery was evaluated by spiking 3 levels of human von Willebrand Factor into health human serum sample. The un-spiked serum was used as blank in this experiment.

The recovery ranged from 94% to 126% with an overall mean recovery of 109%.

LINEARITY

To assess the linearity of the assay, five samples were spiked with high concentration of von Willebrand Factor in human serum and diluted with Sample Diluent to produce samples with values within the dynamic range of the assay.

The linearity ranged from 101% to 116% with an overall mean recovery of 103%.

SAMPLE VALUES

Serum/Plasma - Thirty samples from apparently healthy volunteers were evaluated for the presence of human von Willebrand Factor in this assay. No medical histories were available for the donors.

Sample Matrix	Sample Evaluated	Range (ng/ml)	Detectable %	Mean of Detectable (ng/ml)
Serum	30	10.53-1936.87	100	1056.08

n.d. = non-detectable. Samples measured below the sensitivity are considered to be non-detectable.

DISCLAIMER AND VERSION

For research use only. Not for use in clinical diagnostic procedures.

Copyright 2024 AREX Biosciences Ltd. Version.240820