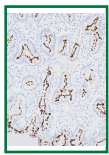
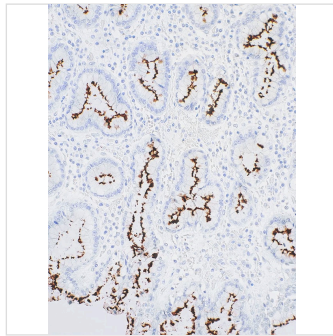


Helicobacter pylori Rabbit Monoclonal Antibody(ARM881)



Key features and details

Reactivity: Human

Application: IHC

Host: Rabbit

Clonality: Monoclonal

Isotype: IgG

Target Name: Helicobacter pylori

Brand: **AREX**
BIOSCIENCES

CAT.NO. : ARM6671

US\$: 350.00

Size:

100μL

Trail, Bulk size or
Custom requests
Please contact us

*产品价格可能会有所调整，请以品牌方官网实时更新的价格为准，以确保准确性。

Product Details

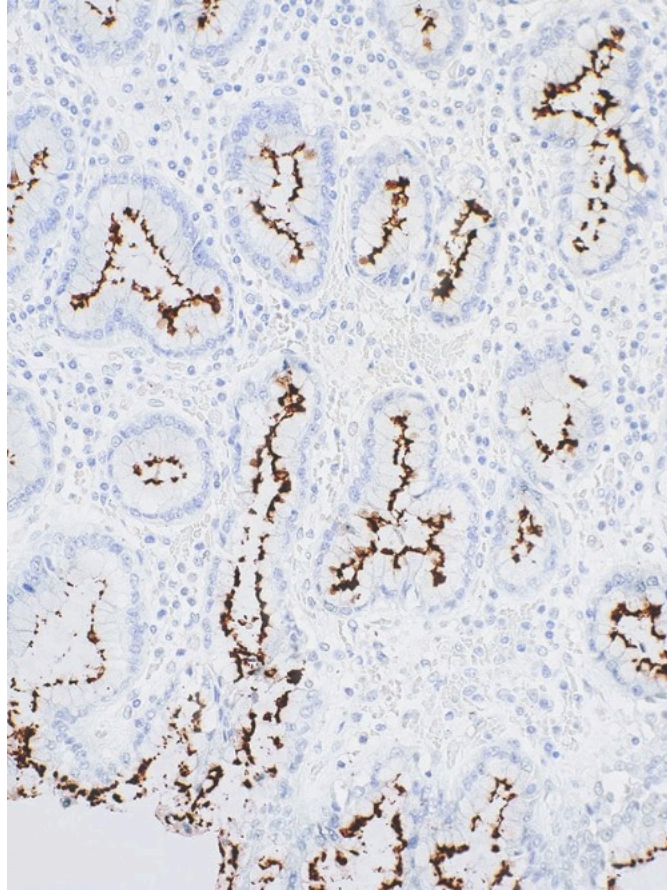
Background

Helicobacter pylori are spiral-shaped, gram-negative bacteria that inhabit the mucosal lining of the gastric epithelium. Infection with H. pylori is strongly associated with many gastroduodenal diseases, including intestinal-type carcinomas, peptic and gastric ulcers, and chronic gastritis. There is evidence linking these bacteria to gastric and mucosa-associated lymphoid tissue lymphomas, and H. pylori has also been indicated as a risk factor for colorectal polyps in children.

Application

Dilution: IHC: 1:50-1:200

Buffer Composition: Tris Buffer, pH 7.3 - 7.7, with 1% BSA and <0.1% Sodium Azide

Data

Immunohistochemistry (Formalin/PFA-fixed paraffin-embedded sections) analysis of human stomach sections labeling *Helicobacter pylori* with ARM881.

Storage

Store at 4°C short term. For long term storage, store at -20°C, avoiding freeze/thaw cycles.