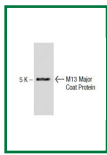
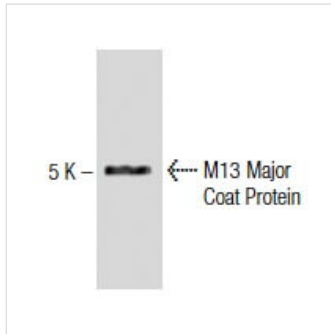


M13 Major Coat Protein Mouse Monoclonal Antibody(ARA828)



Key features and details

Reactivity:Species independent

Application:WB, IP, IF,FCM

Host:Mouse

Clonality:Monoclonal

Isotype:IgG2ak

Target:M13 Major Coat Protein

Brand: **AREX**
BIOSCIENCES

CAT.NO. : ARA6630

US\$: 350.00

Size:

200µg

Trail, Bulk size or
Custom requests
Please contact us

*产品价格可能会有所调整，请以品牌方官网实时更新的价格为准，以确保准确性。

Product Details

Background

Morphogenesis of filamentous phage includes synthesis of the phage major coat protein in precursor form, its insertion into the host cell plasma membrane, its cleavage to the mature form of the protein and its assembly there into virions. At each stage of infection, the major coat protein of coliphage M13 binds to the Escherichia coli cytoplasmic membrane with its antigenic site exposed to the cell exterior, which is at the amino - terminus of the protein. Coat protein synthesized in vitro is initially made with a 23 amino acid amino - terminal “leader peptide”, termed “procoat”, that is also a biosynthetic precursor of coat protein in vivo. The filamentous bacteriophage major coat protein occurs as a membrane - spanning assembly intermediate prior to incorporation into the lipid - free virion. Assembly of coliphage M13 is known to occur as the viral DNA crosses the cytoplasmic membrane, shedding its virus - coded DNA unwinding protein and acquiring from the membrane approximately 2400 copies of the major coat protein.

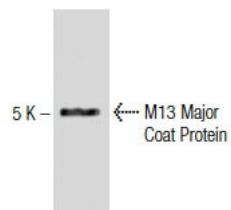
Application

M13 Major Coat Protein is recommended for detection of M13 filamentous phage coat protein gp8p by Western Blotting (starting dilution 1:200, dilution range 1:100 - 1:1000), immunoprecipitation [1 - 2 µg per 100 - 500 µg of total protein (1 ml of cell lysate)], immunofluorescence (starting dilution 1:50, dilution range 1:50 - 1:500) and flow cytometry (1 µg per 1 x 10⁶ cells). Molecular Weight of M13 Major Coat Protein: 5 kDa.

Source

M13 Major Coat Protein is a mouse monoclonal antibody raised against isolated M13 phage coat proteins.

Data



M13 Major Coat Protein. Western blot analysis of M13 Major Coat Protein expression in M13 phage lysate.

Storage

Store at 4°C, **DO NOT FREEZE**. Stable for one year from the date of shipment.

Research Use Only

For Research Use Only. Not for use in diagnostic procedures.