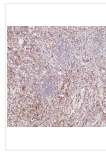
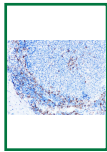
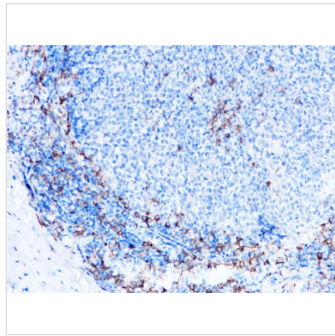


CD138 Rabbit Monoclonal Antibody(ARB889)



Key features and details

Target:CD138

Clone ID:ARB889

Host:Rabbit

Molecular Weight:32 kDa

Purity:ProA affinity purified IgG

Species Cross-reactivity:Human

Applications:IHC-P

Swissprot ID:P18827

Brand: **AREX**
Biosciences

CAT.NO. : ARB6681

RMB: 3500.00

Size:

1mL

Trail, Bulk size or
Custom requests
Please contact us

*产品价格可能会有所调整, 请以品牌方官网实时更新的价格为准, 以确保准确性。

Product Details

Background

CD138, also designated syndecan - 1, is a member of the syndecan family of four transmembrane spanning proteins capable of binding to heparan sulfate and chondroitin sulfate molecules. The syndecans' main functions are to control cell growth and differentiation as well as to maintain cell adhesion and cell migration. Under normal conditions CD138 is predominantly expressed on mature plasma cells and early pre - B cells, while other haematolymphoid cells are negative. Various types of epithelial cells are also CD138 positive. Squamous epithelial cells show strong membranous and some cytoplasmic staining, except for the mature superficial squamous epithelial cells which are unstained. Mature mesenchymal and neural tissues are not stained. Among haematolymphoid neoplasms, CD138 is expressed in practically all cases of plasma cell malignancies. Among nonhaematolymphoid neoplasms the expression of CD138 is found in various types of carcinoma. In the following, the large majority of cases is CD138 positive: skin squamous cell carcinoma and basal cell carcinoma, colorectal adenocarcinoma, cholangiocarcinoma, transitional cell carcinoma, endometrial adenocarcinoma, ductal and lobular breast carcinoma, hepatocellular carcinoma, renal cell carcinoma, and lung adenocarcinoma. CD138 is a very sensitive and specific marker for identification of plasma cells and plasma cell differentiation within haematolymphoid tissues in benign and neoplastic conditions.

Overview

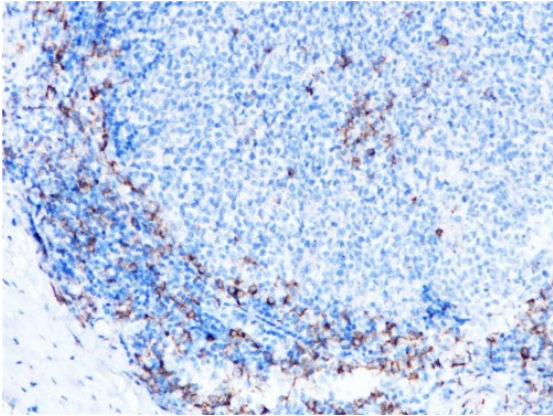
Target	CD138
Host Species	rabbit monoclonal antibody
Molecular Weight	32 kDa
Purity	ProA affinity purified IgG
Species Cross-reactivity	Human
Form	Liquid
Applications	IHC-P
Swissprot ID	P18827
Immunogen	Synthetic peptide corresponding to CD138 residues within aa200-300 of CD138
Storage Buffer	PBS 59%, Sodium azide 0.01%, Glycerol 40%, BSA 0.05%

Storage Conditions	-25°C to -18°C
Dilutions	IHC-P: 1:100-1:200
Subcellular Location	Membrane
Recommended Method	Heat induced epitope retrieval with Tris-EDTA buffer (pH 9.0), primary antibody incubate at RT (18°C-25°C) for 30 minutes

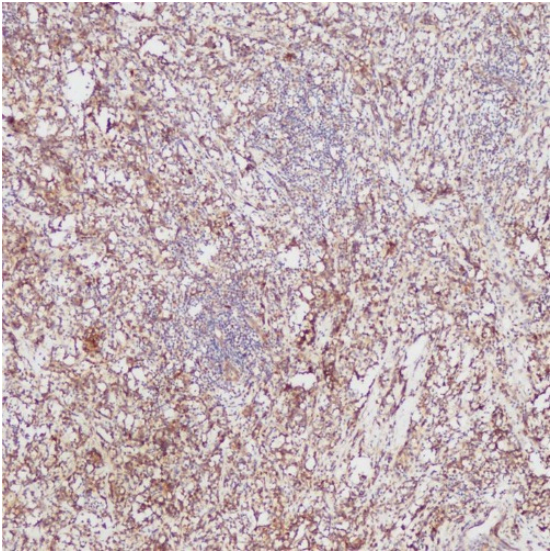
Application

Application	Dilution Ratio
IHC-P	1:100 - 1:200

Data



Immunohistochemical staining of human tonsil tissue sections using CD138 Rabbit Monoclonal Antibody (ARB889).



Immunohistochemical staining of human plasmacytoma tissue sections using CD138 Rabbit Monoclonal Antibody (ARB889).

Storage

Store at 4°C short term. For long term storage, store at -20°C, avoiding freeze/thaw cycles.

Research Use Only

For Research Use Only. Not for use in diagnostic procedures.