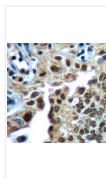
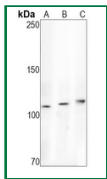
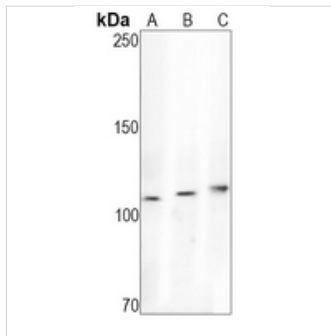


RB1 Rabbit Monoclonal Antibody(ARA831)



Key features and details

Reactivity:Human

Application:WB,IHC

Host:Rabbit

Clonality:Polyclonal

Target:RB1

Brand: **AREX**
Biosciences

CAT.NO. : ARA6642

RMB: 2500.00

Size:

100μL

Trail, Bulk size or
Custom requests
Please contact us

*产品价格可能会有所调整，请以品牌方官网实时更新的价格为准，以确保准确性。

Product Details

Background

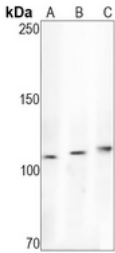
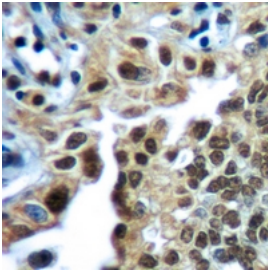
Rb is a tumor suppressor nuclear phosphoprotein capable of binding to DNA. It is phosphorylated on serine and threonine, but not on tyrosine residues. It forms a complex with SV40 large T antigen, adenovirus E1A, and human papilloma virus-16 E. Rb protein may act by regulating transcription and loss of its function leads to uncontrolled cell growth. Aberrations in the RB gene have been implicated in cancers of breast, colon, prostate, kidney, nasopharynx, and leukemia.

Application

Application	Dilution Ratio
WB	1:500 - 1:1000
IHC	1:50 - 1:200

Overview

Product Description	Recombinant rabbit monoclonal antibody to RB1
Immunogen	Recombinant fusion protein of human RB1. The exact sequence is proprietary.
Purification Method	The antibody was purified by immunogen affinity chromatography.
Clonality	Monoclonal
Product Form	Liquid in PBS, pH 7.3, 50% glycerol, and 0.05% Proclin300.
Gene Name	RB1
Related Names	Retinoblastoma - associated protein; p105 - Rb; pRb; Rb; pp110
Gene ID (Human)	5925
Gene ID (Mouse)	19645
Gene ID (Rat)	24708
Protein ID (Human)	P06400
Protein ID (Mouse)	P13405
Protein ID (Rat)	P33568

Data	<div data-bbox="491 185 606 436"></div> <p data-bbox="477 456 1369 517">Western blot analysis of RB1 expression in A431 (A), H1792 (B), A2780 (C) whole cell lysates. (Predicted band size: 106 kD; Observed band size: 110 kD)</p> <div data-bbox="477 519 746 788"></div> <p data-bbox="477 790 1453 958">Immunohistochemical analysis of RB1 staining in human lung cancer formalin fixed paraffin embedded tissue section. The section was pre-treated using heat mediated antigen retrieval with sodium citrate buffer (pH 6.0). The section was then incubated with the antibody at room temperature and detected using an HRP conjugated compact polymer system. DAB was used as the chromogen. The section was then counterstained with haematoxylin and mounted with DPX.</p>
Storage	Store at 4°C short term. For long term storage, store at -20°C, avoiding freeze/thaw cycles.
Research Use Only	For Research Use Only. Not for use in diagnostic procedures.